

**Stratigraphical study on the pyroclastic flow deposits including a Middle Pleistocene marker tephra of Shiobara-Otawara (So-OT) tephra, the southern Northeast Japan: Recognition of So-OT with major and trace elements of glass shards**

**Yamada, M. <sup>1</sup>, Suzuki, T. <sup>2</sup>, Albert, P. G. <sup>3</sup>, Smith, V. C. <sup>3</sup> and Tomlinson E. L. <sup>4</sup>**

<sup>3</sup>F gr ctvo gpv'qh'I'P cwtn'kij kvqt { 'uelgpegu.'J qmækf q.'Wpkxgtukf. 'Ucr r qtq.'J qmækf q. 'F gr ctvo gpv'qh'I' qgi ter j {.'Vqm{q' O gtrqr qrkcp.'Wpkxgtukf. 'O kpo kqucy c.'J cej kqk 'Vqm{q. 'Lcr cp="TNCJ C. 'Wpkxgtukf 'qh'Qzhqtf. 'Qzhqtf. 'WM" " F gr ctvo gpv'qh'I' gqmi {.'Vtkpk{ 'Eqmgi g'F wdrp="

**Introduction**

Uj kqdctc/Qvcy cte "r {tqerucle"hmjy \*Uq/QV="Uw wnk'gv'crf04226+"ku"e"rti g/uecrg"r {tqerucle"hmjy "htqo " Uj kqdctc/Ecrf gtc. "y j g'pqt vj gtp"Mcqvq'ctgc. "egpvcn'Lcr cp'Uq/QV"cee qo r cplqf "c"lcm'qmw'vgr j tc. "y j lej "j cu" dggp'kf gpv'wkgf "kp"E; 223E"ugf ko gpvct { "ugs vqpeg. "qhl"Uj ko qnkx \*722"no "P P G'htqo "y j g'uwvteg="pqt vj gtp" Lcr cp."d { 'F IX'ej km'w'Uw wnk'gv'crf04234+0J qy gxtg. "y j g'ctg'uqo g'qh'ci g'o qf gn'kp"E; 223E"cuuqekvxf " y kj "y j g'ci g'qh'Uq/QV'F qo kuw'gv'crf04233+"kpf kecvf "y j cv'y g'ci g'qh'Uq/QV'kp"E; 223E"eqtg"ku"472"nc. " dgcewug'y j g'ci g'ku'gunko cvgf "d { 'ci gu'qh'uo g'y kf g'ur tgcg'vgr j tcv'cpf "uqo g'nkpf "qh'dkq/utevki ter j kecn'f cvc' Qp "y j g'qv j gt "j cpf. "O cvuwvte"gv'crf04239+"uj qy gf "y j cv'y g'ci g'qh'Uq/QV'ku"497"nc"kp"E; 223E"eqtg'y kj " uqo g'qh'y j g'vgr j tc'ci gu'cpf "dkqutevki ter j { 'ci gu'F qo kuw'gv'crf04233+0'

Tgegpvnl. "l co cf c'gv'crf04233+"p'r tguu+"tggzco kpgf "y j g'vgr j tqvtevki ter j { "ctqwpf "y j g'r tqzko cni'ctgc"qh'Uq/QV" cpf "tgr qtqg' "Uj kqdctc/Mxco c="Uq/MV+"cpf "Uj kqdctc/Vcpqj cte"Uq/VP +r {tqerucle"hmjy "f gr quku"htqo " qrf guv'vq" {qwpj gt "w'pf gt "Uq/QV'Vj g'utevki ter j { "qh'y j g'ug"r {tqerucle"hmjy "f gr quku. "kpvgi tcvgf "y j kj "qv j gt" ko r qtvcv'vgr j tc'w'pku. "ctg'tgeqputwvxf "kp'vq "y j g'hmjy kpi "tgr'vwxg'utevki ter j ke"qtf gt <C3Ro "qt" C4Ro. "Uq/ MV. "C6Ro. "Uq/VP. "Uq/QV. "C1/O kR. "DV87"htqo " {qwpj guv'vq qrf guv'vq" co cf c'gv'crf04233+"p'r tguu+"0Cnuq. "y j g'ci gu" qh'Uq/QV. "Uq/MV"cpf "Uq/VP "y j g'gtg'vut'kevxf "y kj "C1/O kR"522"0'52"nc+"cpf "j k j /tguqnw'vgr j tc'ci gu'kp" r ct'vewrct "DV87"497"nc+. "C6Ro "559"nc+"cpf "C3Ro "5: 2/632"nc+0"

J qy gxtg. "Uq/MV. "Uq/VP " cpf " Uq/QV" y g'tg" f kwpj vkwj gf " qpn" d { " y j g't " j g'cx { " cpf " nki j v" o kpgtci' eqo r qukkap. "tgl'tcevkg'kpf legu'qh'qt vj q'r {tqzggpu'cpf "o clqt "grgo gpv'qh'i' nuu'uj ctf u'0Vj ku'uwf { "f k'uevuuqu" vj g'f hhtgpegu'co qpi "Uq/VM. "Uq/VP "cpf "Uq/QV"y kj "y j g't "eqo r qukkap"qh'pgy "o clqt "grgo gpv'f c="qh'i' nuu" uj ctf u'y kj "c'f hhtg'v'p'o cej kpg"cpf "tceg"grgo gpv'qh'i' nuu'uj ctf u'0Cnuq. "y j ku'tgugctej "eqo r ctgu"y j g'tceg" grgo gpv'y kj "y j g'qv j gt "Lcr cp'gug'vgr j tcv'0"

**Analysis**

O clqt "cpf "o kpat "grgo gpv'xqrcple"i nuu'ej go kvu { "qh'kpf kxf wcn'l'v'gpkrg"ercuu'y cu'f gyvto kpgf "wukpi "c" y cxgngpi vj /f kur gtukx'LGQN": 822"grge'v'q'p'o ketqr tqdg'kp"y j g'Tugctej "Nedqtcvqt { "hqt "Ctej c'gqmi { "cpf "y j g" J kvqt { "qh'c'tv.'Wpkxgtukf "qh'Qzhqtf 0Vj g'cpen'ugu'y g'tg'r gthqto gf "wukpi "c"Vj g'to q'Uelg'v'v'ke'kECR'S e'kER/ O U'eqw r'gf "vq" c"Vgrgf { pg'Rj qvq'p'O cej kpgu'Cpen'v'g'I 4'3; 5"po "gzko gt "rcugt'cdrv'v'q'p'u'vgo "y kj "c"J grGZ" k'k'y q/xq'w'v'g'cdrv'v'q'p'egm'cv'v'j g'F gr ctvo gpv'qh'I' gqmi {.'Vtkpk{ 'Eqmgi g'F wdrp'0"

**Characteristic properties of each units of So-KT, So-TN and So-OT**

Uq/QV'ku'tqwi j n' "f k'kf gf "kp'vq"hmjy gt "cpf "w'r gt'r ct'0Vj g'hmjy gt "r ct'v'ku'eqpukv'v'f "qh'y j g'r wo leg'hm'f gr qukk" \*Uq/QV"r hc+"cpf "uwti g'f gr qukk' \*Uq/QV"uwti g+0'Vj g'w'r gt "r ct'v'ku'eqpukv'v'f "qh'y j g'y j tgg"r {tqerucle"hmjy " f gr quku'0Vj g'ug"r {tqerucle"hmjy "f gr quku'ctg'f k'kf gf "kp'vq"r wo leg'hmjy "f gr qukk' \*Uq/QV"r hf /n: "r wo leg'hmjy " f gr qukk' \*Uq/QV"r hf /o +."cpf "ueqtke"hmjy "f gr qukk' \*Uq/QV"r hf /w'0 Uq/VP "ku'eqo r qugf "y kj "Wpk'c'f "htqo " qrf guv'vq" {qwpj gu'v'v'q" co cf c'gv'crf04233+"p'r tguu+"0Wpku'c. "e"cpf "f "ctg"r wo leg'hmjy "f gr quku'cpf "w'pk'd'ku'ueqtke" hmjy "f gr qukk'0Uq/MV'ku'c"r wo leg'hmjy "f gr qukk'0"

**Trace and major element of glass shards from So-KT and each unit of So-TN and So-OT**

Vj g'pgy "f cvc"qh'y j g'o clqt "grgo gpv'kp"y j ku'tgugctej "uj qy u'c'uko krt "r cwgt'p"vq" l co cf c'gv'crf04233+"p'r tguu+"hqt" Uq/MV"cpf "cm'w'pku'qh'Uq/VP "cpf "Uq/QV'0"

kp'v'j g'pgy "f cvc"qp"y j g'o clqt "grgo gpv."Uq/MV"cpf "y j g'qv j gt "eqw r'g'qh'vgr j tcv'ctg'engctn' "f kwpj vkwj gf " htqo "EcQ"cpf "M4Q0Uq/MV"j cu'EcQ'klej "30 640'y v0 +cpf "M4Q/r qqt "46640'y v0 +i nuu'uj ctf u'y cp "Uq/ VP "cpf "Uq/QV'0Cnuq. "Uq/QV"cpf "Uq/VP "ctg'f k'kf gf "htqo "Cn4Q5"cpf "HgQ0'Uq/QV"j cu' Cn4Q5'klej "kQ0'Uq/ QV"uwti g<3406340'y v0 +cpf "HgQ/r qqt "kQ0'Uq/QV"r hf /n"30640'y v0 +i nuu'uj ctf u'eqo r ctgf "vq"Uq/VP 0' Vj g'o clqt "grgo gpv'qh'Uq/QV"r hc"ku'uko krt "vq"Uq/QV"r hf /n'ncpf "Uq/QV"r hf /o 0'Uq/QV"uwti g"j cu'P c4Q'klej " \*5Q 660'y v0 +cpf "rkwg" M4Q/r qqt "46640'y v0 +i nuu'uj ctf u'cpf "Uq/QV"r hf /w'j cu' M4Q"cpf "HgQ'klej " \*M4Q<406650'y v0 =HgQ<3Q 640'y v0 +cpf "P c4Q/r qqt "50650'y v0 +i nuu'uj ctf u'eqo r ctgf "vq"y j g'qv j gt" w'pku'qh'Uq/QV'0"

Vj ku'tgugctej "cpcn| gf "tceg"grgo gpv'qh'i rnuu'uj ctf u'htqo "Uq/MV."cm'wpku'qh'Uq/VP "cpf "Uq/QV."cnj qwi j " vj g'f'cvc'qh'Uq/VP "e"y cu'gzenmf gf "f'wg'vq'cdpqto crk| "qh'vj g'f'cvc'qh'Uq/VP "e" \*Hki B-0'Vj gug'tceg"grgo gpv' f'cvc' kpf'kecvg' vj g' ercct' f'khtgpeg" dgwy ggp' Uq/MV" cpf " vj g' qvj gt' eqwr ng' qh' vgr j tcu' \*Hki B-0' Uq/MV" ku' f'kukpi vkuj gf "htqo "Uq/VP "cpf "Uq/QV"y kj "o quv'qh'lpeqo r'cvkdrng"grgo gpv'y kj qwv'Ut. "kp'r ct'kwrcrct'J TGG" \*KQ0'5'0'3"l d+'cpf "l "42'0'3"rro + \*Hki B-0' Cnj qwi j "vj g'tceg"grgo gpv'y cupw'cdng'vq'f'kukpi vkuj "dgwy ggp' Uq/VP "cpf "Uq/QV."cpf "cm'wpku'qh'Uq/VP "cpf "Uq/QV" \*Hki B-0'Vj g'tceg"grgo gpv'qh'cm'wpku'qh'Uq/VP "cpf " Uq/QV"y gtg'gptlej gf "kp"NTGG'tgr'vkg"vq'vj g'J TGG" \*Nc| d" ? "7'0'3-0'Vj g'tceg"grgo gpv'eqpegp'tcvkqpu" qdugt'xgf "kp"vj g'i rnuu'uj qy gf "uqo g'uki p'khecpv'xctkcdkx| " \*KQ0' Uq/QV" r'hc < 7296977" rro " Dc+." y j kuv'vj g' qvj gt' lpeqo r'cvkdrng' tceg"grgo gpv'eqpegp'tcvkqpu'ctg'j qo qi gpgqwu' \*KQ0' Uq/VP "d' < 65'0'6" rro " l -0"

Vj g'tceg"grgo gpv'qh'Uq/VP "cpf "Uq/QV" gptlej gf "kp"NTGG'tgr'vkg"vq'vj g'J TGG" \*KQ0' Uq/QV" r'hf /o < Nc| d" ? "7'0'3-0'Vj g'tceg"grgo gpv'eqpegp'tcvkqpu" qdugt'xgf "kp"vj g'i rnuu'uj qy gf "uqo g'uki p'khecpv' xctkcdkx| " \*KQ0' Uq/QV" r'hr'hc < 7296977" rro " Dc+." y j kuv' vj g' qvj gt' lpeqo r'cvkdrng' tceg" grgo gpv' eqpegp'tcvkqpu'ctg'j qo qi gpgqwu' \*KQ0' Uq/QV" r'hf /o < 5; '0'5" rro " l -0"

**Comparison chemical compositions of So-KT, So-TN and So-OT with other Japanese tephras**

Cqnk' cpf "O cej kf c" \*4228+ cpcn| gf "o clqt" grgo gpv'eqo r'qukkqpu'qh'y kf gur tgef "vgr j tcu' gtwr vgf "htqo " xctkqwu' uq'wtegu' kp' Lcr cp' Cnuq. "vj g'tgugctej "eqp'v'gf gf "vgr j tcu'htqo "P qt'vj gcu' Lcr cp' cte" j cxg" M4Q/r qqt " \*cr r' t'z'k'0 cvgn| "/5" y v0 + "xqre'cple" i rnuu'uj. "cpf "vgr j tcu'htqo "Uq'w'j y guv' Lcr cp' cte" j cxg" M4Q/tlej "5/" y v0 + " xqre'cple" i rnuu'uj Vj g'xcnw'g'qh' M4Q'qh' Uq/MV. "Uq/VP "cpf "Uq/QV" eqo g'w'pf gt' vgr j tcu'htqo "P qt'vj gcu' Lcr cp' cte" Mko wtc" g'v'c'f' \*4237+ cpcn| gf "O ctw'f' co c" g'v'c'f' \*4238+ cpcn| gf "vj g'npqy p" tceg"grgo gpv'eqo r'qukkqpu'qh' vgr j tc'wpku'vj cv'gtw' vgf "htqo "uq'w'j gtp" M{ wuj w. "pqt'vj gtp" J qp'uj w'cpf "J qm'ekf q. "cpf "vj g'P qtknwt'c'xqre'cple" | qpg' O' Cnuq. "O k' wpq" \*4223+ tgr'qt' vgf "vj cv' Nc| "ku" ko r'qt'cv'v'f' kci p'qu'ke "vq'qn' hqt" cu'ki p'kpi "vgr j tc' r'c' {gt' "kp" Lcr cp' "cpf "vj g'xcnw'g'qh' Nc| "kp" P qt'vj gcu' Lcr cp' cte" y cu' ec'w'rc'v'gf "cdqw' 2027/2070' Vj g'tgu'w' qh' vj g' eqo r'ct'ku'p'vq'vj g'tceg"grgo gpv'f'cvc'htqo "vj g'r' t'gx'k'w'u't'gugctej gu'kpf'kecv'gf "vj cv'vj g'tceg"grgo gpv'qh'Uq/MV. " Uq/VP "cpf "Uq/QV" j cu'c'uko k'rc' t'v'g'p'f'vq' P qt'vj gcu' Lcr cp' cte' O' Cnuq. "vj g' Nc| "qh'Uq/MV" cpf "cm'wpku'qh'Uq/ VP "cpf "Uq/VP "ctg'rk'w'g'j ki j gt' vj cp' 207' \*Uq/MV < 2088. "cm'wpku'qh'Uq/VP "cpf "Uq/QV < 2072/2076+0"

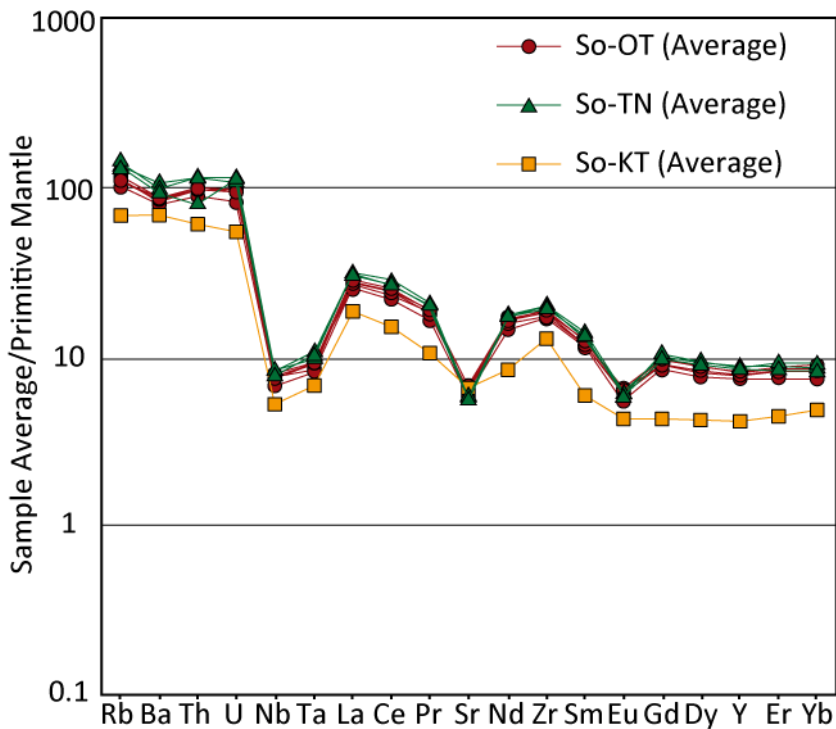


Fig. 1. Trace element of the average values of volcanic glass shards of So-KT, So-TN and So-OT.

**References**

Cqnk' M' cpf "O cej kf c." J 0" O clqt" grgo gpv'eqo r'qukkqpu'qh' xqre'cple" i rnuu'uj ctf u'kp' vj g'rc'v'g' S wcy'gt'pct { " y kf gur tgef "vgr j tcu'kp' Lcr cp' /F k'w'k'd'w'k'q' qh' vgr j tcu' wulpi "M4Q/VkQ4" f'kci t'co u' l" D'w'v'0' I g'q'v'0' U'w't'x'0' Lcr cp' 4228. '79. '45; /47: 0"

"

F qo kuw."J 0"P kuj k"J 0"Wej kf c."L0"Qf c."O 0"Qi cpq."M0"Vctc."C0"Cqkng."M0'cpf "Uj ko qnkc"O letqhquki"  
Tgugctej "I tqwr ."Ci g"o qf gr'qh'eqtg"ugf ko gpw'cngp"d{ "F IX"EJ KM W'f wtkpi "vj g"uj cngf qy p"etwkgu"  
qhh'Uj ko qnkc"Rgpkpuwr"l'P gy ungv0'Utcvi t04233."66."335/3440

Mko wtc."L0"P ci ej kuj k"[ 0"Ucvqi wej k"[ 0'cpf "Ej cpi ."S 0"Qtki kpu"qh'hgnle"o ci o cu"kp"Lcr cpqgug'uwdf wevkqp"  
| qpg<I gqej go lecn'ej ctcevgtk'cvkpu"qh'vgr j tc"htqo "ecrf gtc/hqto kpi "gtw vkpu">"7"O c0'l'I gqej go 0'  
I gqr j {u0I gqu{u04237."38."4369/43960"

O ctw'co c."U0"J cvqtq'M0"J ktcv."V0'cpf "F cpj etc0'V0"C'r tqr qugf"o gj qf qmji { "hqt'cpcn'ugu'qh'y kf g/tepi gf "  
grgo gpw'kp"xqreple'i nuu'uj ctf u'kp'y kf gur tgc'f "S wcvgtpt { "vgr j tcu"l'S wcv0'kp04238."5; 9."489/4: 20"

O cww'wtc." V0" Hwtwcy c." C0" Uj ko qi co c." M0" I qvq." P0' cpf " Mqo cwwdctc." L0" Ncvg" s wcvgtpt { "  
vgr j tqutcvki tcr j { "cpf"et {r vq'vgr j tqutcvki tcr j { "qh'f ggr /ugc"ugs wpegu"\*Ej kn' w'E; 223E"eqtgu"cu'vqqu"  
hqt"o ct'kp'g'gttce'ej tqpqmji { "kp'P G'Lcr cp"l'S wcv0I gqej tqpqm04239."62."34; /3670"

O k'wpq."M0"K'xguki cvkqp"qh'xqreple"ctgcu"cpf "y g"l'phwpep"uecrg"qh'y g"xqreple"ctgcu"y kj "y g"Rrkqegpg"  
cpf "Rrgkuvqegpg'y kf gur tgc'f "vgr j tcu"l'Ej kn' w'O qp'v n' "4223."45.827/82; 0"

Uw'wnk"V0"Hwky etc."Q0'cpf "F cpj etc."V0"Utcvi tcr j { "cpf"ej tqpqmji { "qh'o kf f'rg"Rrgkuvqegpg"vgr j tcu"kp'cpf "  
ctqwpf "Ck' w'ctgc."pqt'v gcu'Lcr cp"l'l'qwt0'Vqnf q'I gqi t0'Uqe04226."335."83/35: 0"

Uw'wnk"V0"Cqnk"MO"Mcyc k"V0"Ucneo qvq."V0'cpf "Kko c."MO"O kf f'rg"Rrgkuvqegpg"vgr j tqutcvki tcr j { "qh"  
E; 223"eqtg"ftkn'gf "d{ "EJ KM W'qh'Uj ko qnkc"Rgpkpuwr"cpf "ku"cr r'ncv'kqp"ht"kp"l'l'Lcr cp"l' gque0'  
Wpkqp"O gg04234."J S T45/360"

[ co cf c."O 0"Mcyc k"V0"P kuj k'cy c"HO'cpf "Uw'wnk"V0"Utcvi tcr j lecn'uwf { "qp"y g"O kf f'rg"Rrgkuvqegpg"  
r { tqer'wle'hny "f gr quku."pqt'v gtp"Vqej ki k'cpf "uqwj gtp"Hwuwj ko c"Rtghgewtgu."P qt'v gcu'Lcr cp"l'l'qwt0'  
I gqr0'Uqe0'Lcr cp"kp'r tgu0'

"

"

"

"